



Navigantium

Yorkshire Lady

Landing Craft

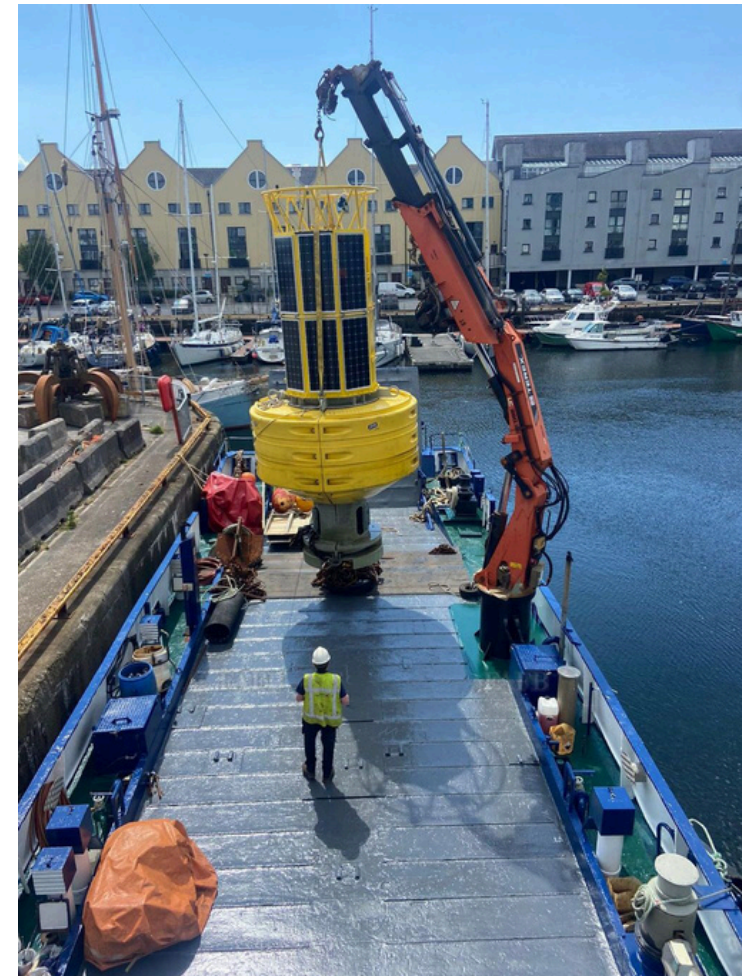
Full Irish Loadline/P5 & Mecal Workboat Uk

The Yorkshire Lady is a versatile landing craft and has been utilised for projects around Ireland and the UK.

The vessel is powered by 2 Roll-Royce Perkins engines and is equipped with a 38tm crane and 4 point mooring capability

The vessel has carried charter work in the following areas

- Transport
- Commercial Diving with 4 point mooring
- Windfarm support
- Scientific Research to Marine Scientists
- Survey Work
- Launch and recovery of subsea assets
- Pipelay operations





Navigantium

Yorkshire LAdy

Landing Craft

Full Irish Loadline/P5 & Mecal Workboat Uk

Specification

Built 1969

LOA - 29m

Beam - 7m

Draft - 1.1m

2 x Rolls Royce Perkins

4 berth cabin

Galley and separate toilet

Bow Door

38 Ton/meter Terex Crane with 4
extensions.

3 Ton and 5 Ton Capstans

Additional Equipment

4 point mooring

Workboat





Navigantium

Yorkshire Lady

Landing Craft

Full Irish Loadline/P5 & Mecal Workboat Uk



Call/Whatsapp: +353 87 4418 292
Email: makewaves@navigantium.ie